

PRODUCT NO.
73725

PRODUCT NUMBER CODE

73725-X X X C X LF

HOUSING COLOR OPTION

- 0-WHITE
- 1-BLACK

SENSOR CONTACT OPTION

- 0-WITH SENSOR CONTACT
- 1-WITHOUT SENSOR CONTACT

SHIELD PLATING OPTION

- 1- 1.25µm MINIMUM NICKEL UNDERPLATE & 2.5µm MINIMUM BRIGHT TIN OVER ALL AREA. (HOLD DOWN STYLE "A")
- 2- 1.25µm MINIMUM NICKEL UNDERPLATED OVER ALL; 2.5 µm MINIMUM MATTE TIN PLATED ON HOLD DOWN AREA ONLY.(HOLD DOWN STYLE "B")
- 3- 1.25µm MINIMUM NICKEL UNDERPLATED OVER ALL; 2.5 µm MINIMUM MATTE TIN PLATED ON HOLD DOWN AREA ONLY.(HOLD DOWN STYLE "A")
- 4- 1.25µm MINIMUM NICKEL UNDERPLATED & 2.5µm MINIMUM BRIGHT TIN OVER ALL AREA. (HOLD DOWN STYLE "B")
- 5- 1.25µm MINIMUM NICKEL UNDERPLATED OVER ALL; 2.5µm MINIMUM MATTE TIN PLATED ON HOLD DOWN AREA ONLY (HOLD DOWN STYLE "C")
- 6- 1.25µm MINIMUM NICKEL ONLY. (HOLD DOWN STYLE "A")
- 7- 1.25µm MINIMUM NICKEL UNDERPLATED & 2.5 µm MINIMUM MATTE TIN PLATED OVER ALL. (HOLD DOWN STYLE "A")
- 8- 1.25µm MINIMUM NICKEL UNDERPLATED & 2.5 µm MINIMUM MATTE TIN PLATED ALL AREA. (HOLD DOWN STYLE "B")
- 9- 1.25µm MINIMUM NICKEL UNDERPLATED OVER ALL; 2.5 µm MINIMUM MATTE TIN PLATED ON HOLD DOWN AREA ONLY (HOLD DOWN STYLE "D")
- S- 1.25µm MINIMUM NICKEL ONLY.(HOLD DOWN STYLE "A"). HIGH PERFORMANCE MATERIAL FOR 12,000 DURABILITY CYCLES
- A- 1.25µm MINIMUM NICKEL PLATED OVER ALL 2.5 µm MINIMUM MATTE TIN PLATED ON HOLD DOWN AREA ONLY (HOLD DOWN STYLE "F")
- B- 1.25µm MINIMUM NICKEL PLATED OVER ALL 2.5 µm MINIMUM MATTE TIN PLATED ON HOLD DOWN AREA ONLY (HOLD DOWN STYLE "F")

TERMINAL OPTION

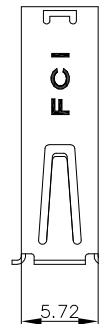
50u" NI UNDERPLATE; 30u" GXT CONTACT AREA,100u" TIN TAIL AREA;

- 0- DIM "A": 2.29 (TERMINAL TAIL LENGTH);
- 1- DIM "A": 3.71 (TERMINAL TAIL LENGTH);
- 2- DIM "A": 3.00 (TERMINAL TAIL LENGTH);

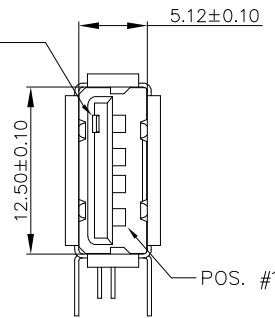
NOTES:

1. MATERIAL:
CONTACTS: COPPER ALLOY
SHIELD: COPPER ALLOY
HOUSING: UL 94V-0 THERMOPLASTIC, COLOR: SEE PRODUCT CODE
2. PLATING:
CONTACTS: GOLD FLASH OVER PALLADIUM NICKEL (0.76µm MINIMUM) IN CONTACT AREA; 2.5 µm TIN MINIMUM IN SOLDER TAIL AREA.
1.27 µm MINIMUM NICKEL UNDERPLATE OVER ALL SURFACES.
SHIELD: SEE PRODUCT NUMBER CODE.
(THE PLATING MEASURE POINT ON THE SHIELD HOLD DOWN AREA ONLY).
3. DATUMS & BASIC DIMENSIONS TO BE DETERMINED BY CUSTOMER
4. RECOMMENDED PCB BOARD THICKNESS IS 1.00 ~ 1.60mm EXCEPT 73725-1191BLF; 73725-1191BLF CAN BE USED FOR THE PCB BOARD THICKNESS 2.30 ~2.65mm.
5. MAXIMUM PANEL THICKNESS TO BE 2.67mm IF MOUNTED BEHIND PANEL
6. METAL SHELL SLIVER 0.20 MAX.
7. NI PLATING DOES NOT COMPLY WITH THE USB STANDARDS (TO BE CONTINUED)

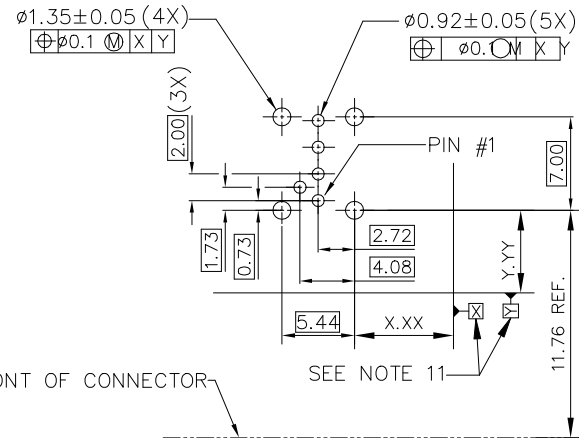
- LEAD FREE OPTION
SEE NOTE 9
- PACKAGING OPTION
B - TUBE
R - TAPE&REEL
- SPECIAL CODE FOR CISCO



SENSOR CONTACT

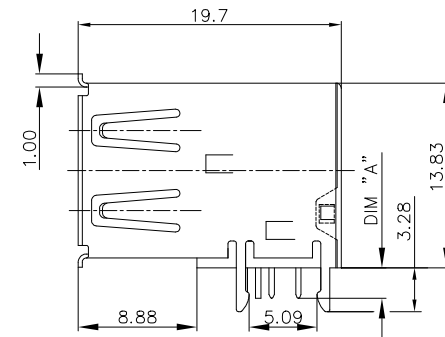


WITH SENSOR CONTACT



FRONT OF CONNECTOR

PC BOARD MOUNTING DIMENSIONS FOR 5 PIN



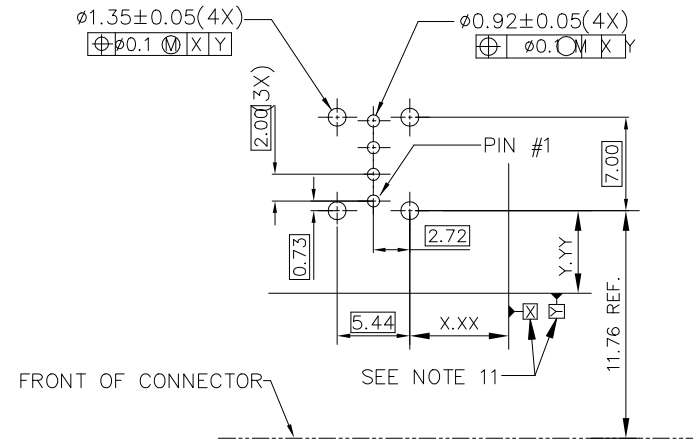
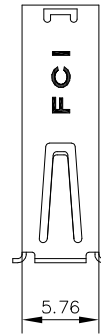
FOR 73725-X0X0B
HOLD DOWN STYLE "A"

mat'l. code		surface ¹²³ / tolerance		projection		product family	
		ISO 1302 / ISO 406 ISO		1101		HPL 511 USB 2.0	
ltr		ecn no		dr		date	
AJ		ELX-N-27708		LZ		2017/08/15	
AK		ELX-N-34768-4		YY		2019/09/19	
AL		ELX-N-39429-1		YY		2020/12/04	
		dr		PAMP		5/20/97	
AF		ELX-N-145920.HAN		06/10/2013		engr R Y LIU 5/20/97	
AG		ELX-N-21594		LQ		08/04/2015 chr R Y LIU 5/20/97	
AH		ELX-N-21919		LQ		08/04/2015 appd JENN TSAO 5/20/97	
sheet		revision					
index		sheet					
						Amphenol FCI	
						dwg no 73725 sheet 1 of 4 size A3	
						type Product Customer Drawing	

PRODUCT NO.
73725

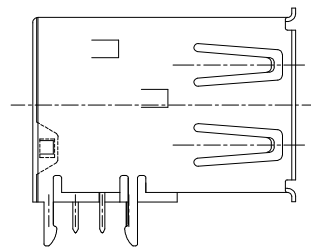
(CONTINUED)

8. P/N'S WITH SUFFIX "LF" ARE LEAD FREE P/N'S
9. FOR LEAD FREE P/N, THE PRODUCT MEET EUROPEAN UNION DIRECTIVES AND OTHER COUNTRY REGULATION AS DESCRIBED IN GS-22-008
10. FOR THE PRODUCTS WITH THE METAL SHELL PLATING NICKEL AND MATTE SN CAN WITHSTAND EXPOSURE TO 260°C PEAK TEMPERATURE FOR 40 SECONDS IN A CONVECTION, INFRA-RED OR VAPOR PHASE REFLOW PROCESS; FOR THE PRODUCTS WITH METAL SHELL PLATING BRIGHT SN OR SEMI-BRIGHT SN CAN'T WITHSTAND REFLOW AND JUST CAN WITHSTAND EXPOSURE TO 260°C PEAK TEMPERATURE FOR 10 SECONDS IN WAVE SOLDERING PROCESS.
11. FOR ALL LEAD FREE P/N'S, WITH SUFFIX LF.
12. THE PRODUCT CAN BE USED FOR PIP PROCESS
13. DATUM OF CUSTOMER'S PCB LAYOUT.
14. TID NUMBER: 63000197.

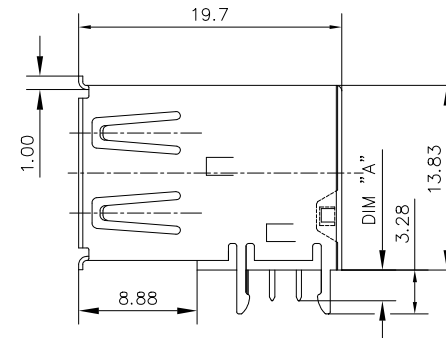
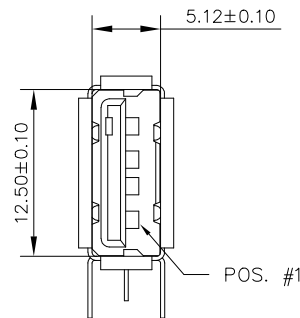


FRONT OF CONNECTOR

PC BOARD MOUNTING DIMENSIONS FOR 4 PIN



WITHOUT SENSOR CONTACT



FOR 73725-X1X0B
HOLD DOWN STYLE "A"

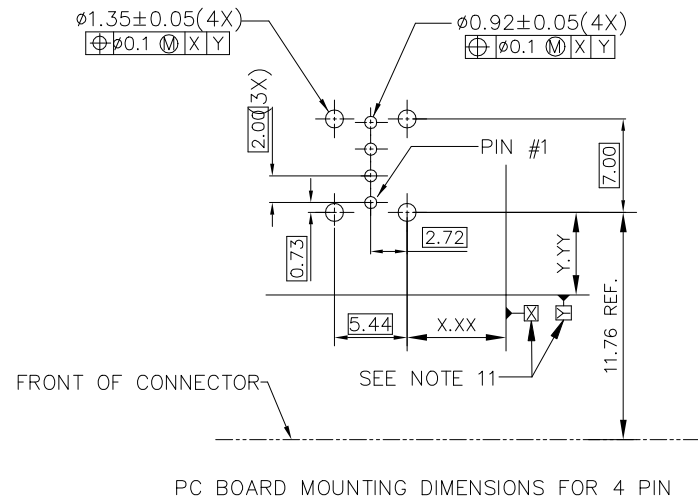
Amphenol
FCI

© 2016 AFCI

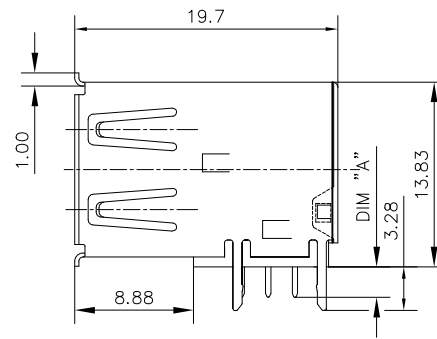
©

mat'l. code		surface ¹²³ / tolerance		projection		product family	
		ISO 1302 ✓ / ISO 406 ISO		ISO 1101		HPL 511 USB 2.0	
ltr		ecn no		dr		date	
AL							
tolerances unless otherwise specified		.0±.30		mm		title	
angles		.00±.20		←		USB UP-RIGHT RECEIPT	
0°±2'		.000±.10		scale 1:1		dwg no	
dr		PAMP		5/20/97		sheet 2 of 4	
engr		R Y LIU		5/20/97		size	
chr		R Y LIU		5/20/97		A3	
appd		JENN TSAO		5/20/97		type	
						Product Customer Drawing	
sheet index		revision sheet					

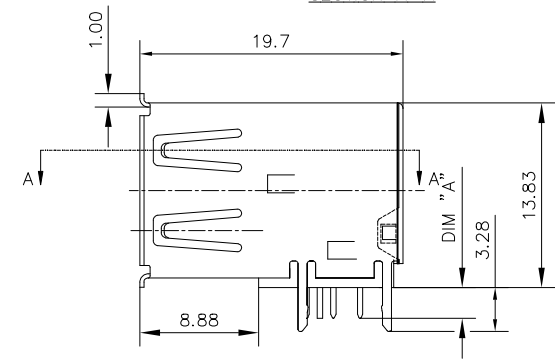
PRODUCT NO.
73725



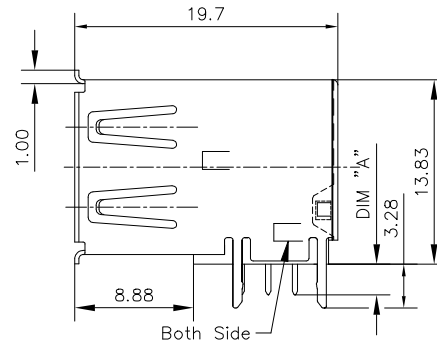
PC BOARD MOUNTING DIMENSIONS FOR 4 PIN



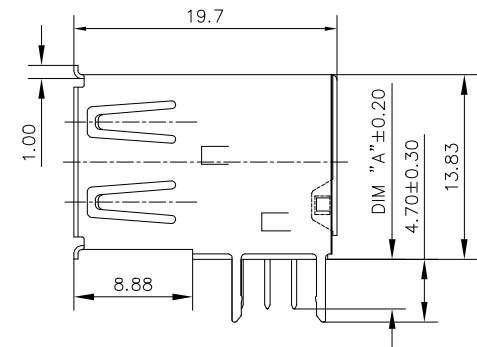
WITHOUT SENSOR CONTACT
FOR 73725-X1X0B
HOLD DOWN STYLE "B"



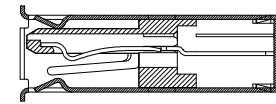
WITH SENSOR CONTACT
FOR 73725-X0X0B
HOLD DOWN STYLE "B"



WITHOUT SENSOR CONTACT
FOR 73725-XXA0XLF
73725-XXB0XLF ONLY
HOLD DOWN STYLE "F"



WITHOUT SENSOR CONTACT
FOR 73725-X191XLF
HOLD DOWN STYLE "D"



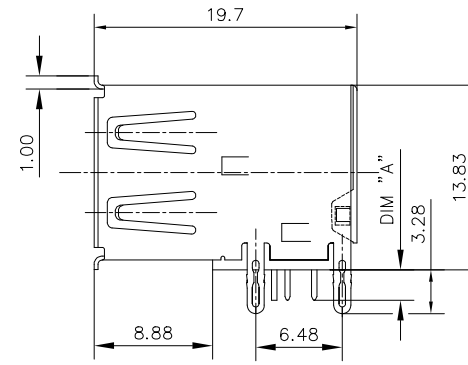
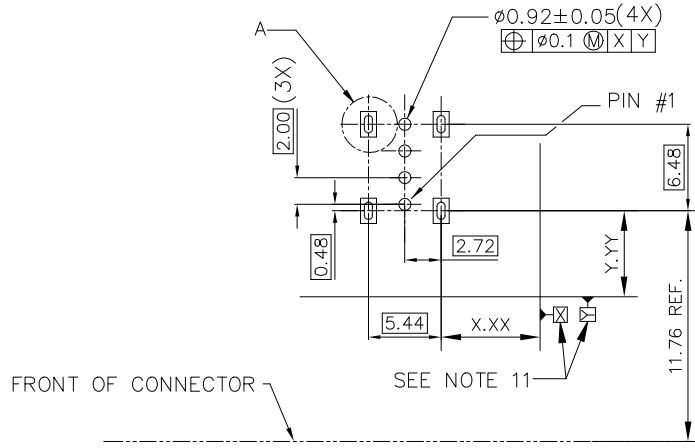
SECTION A-A

Amphenol
FCI

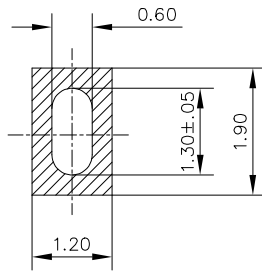
© 2016 AFCI

mat'l. code		surface ¹²³ tolerance		projection		product family	
		ISO 1302 ✓ ISO 406 ISO 1101		1101		HPL 511 USB 2.0	
ltr		ecn no		dr		date	
AL							
angles		linear		mm		title	
0°±2'		.0±.30 .00±.20 .000±.10		scale 1:1		USB UP-RIGHT RECEPT	
dr		PAMP		5/20/97		dwg no	
engr		R Y LIU		5/20/97		sheet 3 of 4	
chr		R Y LIU		5/20/97		size	
appd		JENN TSAO		5/20/97		A3	
sheet index		revision sheet				type Product Customer Drawing	

PRODUCT NO.
73725



WITHOUT SENSOR CONTACT
FOR 73725-X150B
HOLD DOWN STYLE "C"



DETAIL A 5 : 1

mat'l. code		surface ¹²³ ISO 1302 ✓	tolerance ISO 406 ISO 1101	projection 1101	product family HPL 511 USB 2.0
ltr	ecn no	dr	date	tolerances unless otherwise specified	title USB UP-RIGHT RECEPT
AL				angles linear mm 0°±2'	
				.0±.30 .00±.20 .000±.10	
		dr	PAMP	5/20/97	Amphenol FCI
		engr	R Y LIU	5/20/97	dwg no
		chr	R Y LIU	5/20/97	73725
		appd	JENN TSAO	5/20/97	type Product Customer Drawing
sheet index	revision sheet				sheet 4 of 4 size A3