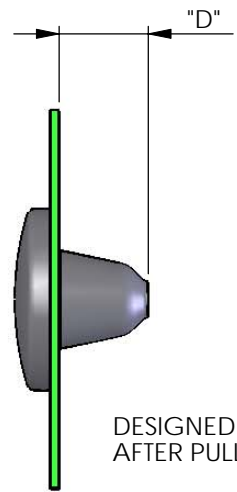
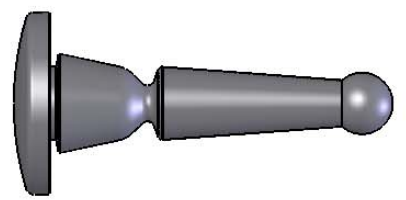
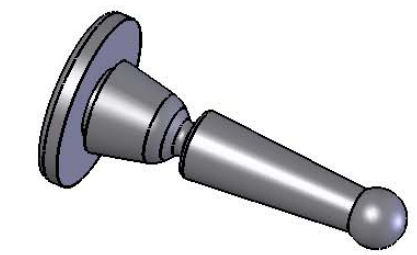
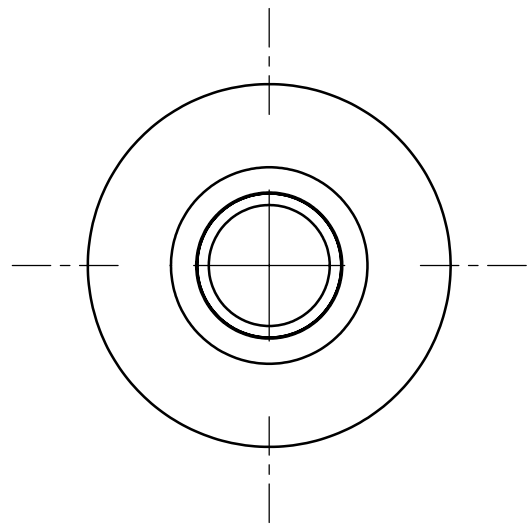
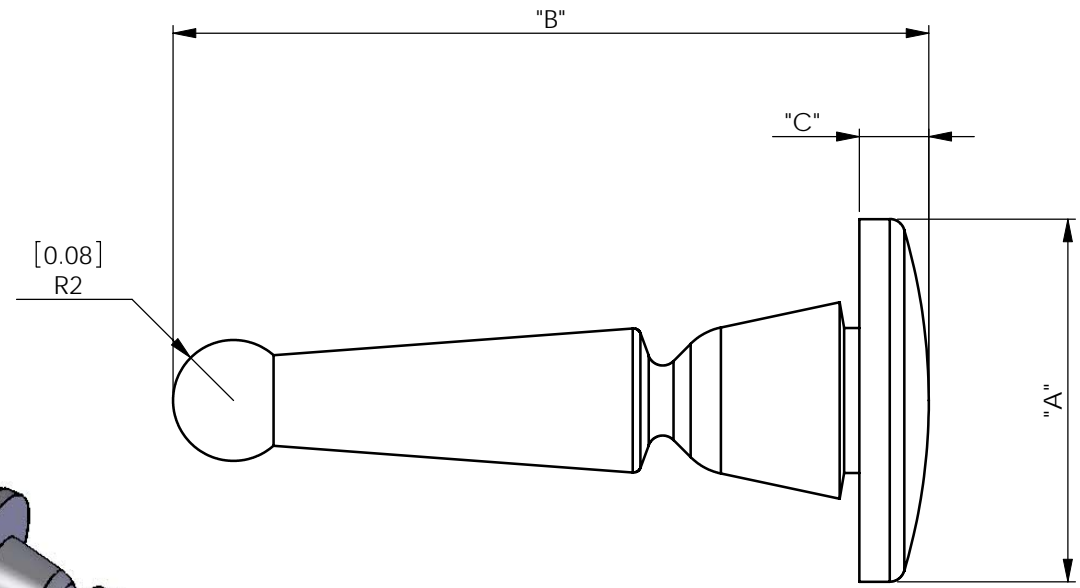


| REV. | MODIFICATION.      | DATE     | DRN |
|------|--------------------|----------|-----|
| 01   | Production Release | 20/07/06 | TC  |
| 02   | ECN2007-134        | 14/08/07 | TC  |
| 03   | CO2010305          | 04/08/08 | MT  |
| 04   | CO2010314          | 08/08/08 | MT  |



DESIGNED TO BREAK-AWAY & BE DISCARDED AFTER PULL-THROUGH MOUNTING



INFORMATION CONTAINED IN THIS DOCUMENT IS CONFIDENTIAL TO RICHCO INTERNATIONAL Co. Ltd. AND MAY NOT BE DISCLOSED OR REPRODUCED IN WHOLE OR PART WITHOUT THEIR WRITTEN CONSENT.

**Richco**®

ALL DIMENSIONS IN mm & [INCHES]  
 GENERAL TOLERANCES ±0.25 [.01]  
 UNLESS OTHERWISE STATED  
 1 DECIMAL PLACE ±0.25 [.01]  
 2 DECIMAL PLACES ± 0.10 [.004]  
 ANG +/-1° UNSPEC RADIUS 0.25 [.01]

THIRD ANGLE

| PART No | MATERIAL TYPE & HARDNESS          | RMS No  | "A"      | "B"      | "C"       | "D"       | PANEL THICKNESS     | HOLE DIAMETER       |
|---------|-----------------------------------|---------|----------|----------|-----------|-----------|---------------------|---------------------|
| BAB-1   | Silicone Rubber - 35+/- 5 Shore A | RMS-316 | 12 [.47] | 25 [.98] | 2.3 [.09] | 6.5 [.26] | 0.6-0.8 [.024-.031] | 5.0-5.4 [.197-.212] |
| BAB-2   | Silicone Rubber - 50+/- 5 Shore A | RMS-364 | 10 [.39] | 20 [.79] | 2 [.08]   | 4 [.16]   | 0.5 [.020]          | 4.7-5.0 [.185-.197] |
| BAB-3   |                                   |         |          |          |           |           |                     |                     |

|                                |               |                  |               |                    |                  |
|--------------------------------|---------------|------------------|---------------|--------------------|------------------|
| MATERIAL: SEE TABLE            |               |                  |               | COLOUR: BLACK      |                  |
| DESCRIPTION: BREAK AWAY BUMPER |               |                  |               | PART No: SEE TABLE |                  |
| DRG No: 06-078                 |               | NPR No: 2005-245 |               | Mass:(g) 0.55g     | SHEET SIZE A4    |
| DRN TC                         | DATE 07/07/05 | CHKD TC          | DATE 19/07/06 | SCALE NTS          | SHEET No. 2 OF 2 |