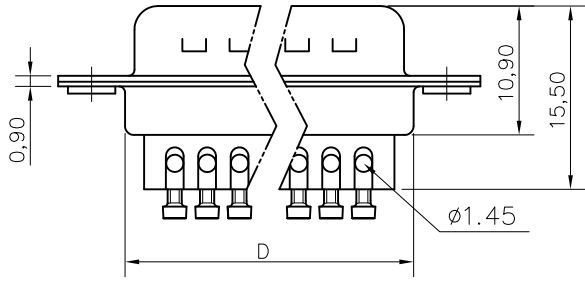
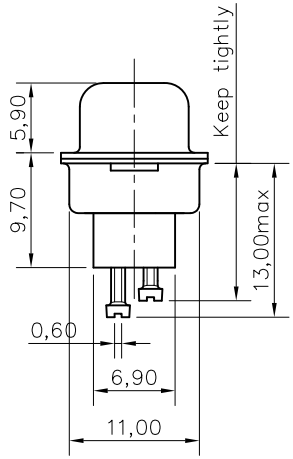
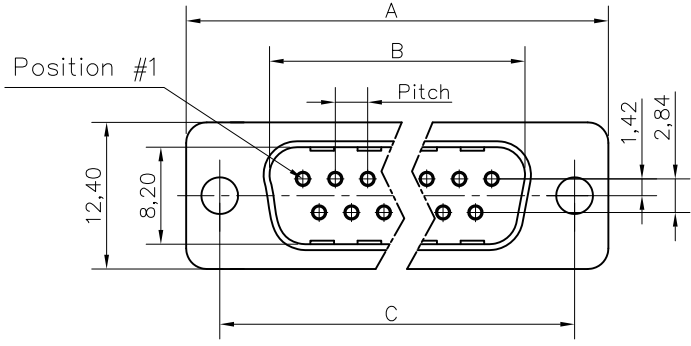


This document is the property of Amphenol Corporation and is delivered on the express condition that it is not to be disclosed, reproduced or used, in whole or in part, for manufacture or sale by anyone other than Amphenol Corporation without its prior consent, & that no right is granted to disclose or to use any information in this document.



Customer drawing

DIM.S	A	B	C	D	Pitch
9	30.70	16.80	25.00	19.40	2.74
15	39.00	25.10	33.30	27.70	2.74
25	52.90	38.80	47.00	41.40	2.77
37	69.20	55.30	63.50	57.90	2.77

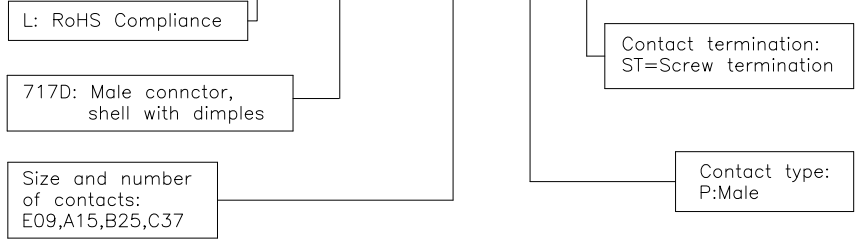
REVISIONS				
SYM	ECN	DESCRIPTION	DATE	APPROVED
1	HK--	First Release Drawing	12/14/07	IP
2	HK--	Update the Drawing	10/20/14	IP

D-SUB TECHNICAL DATA

SHELL : Steel 2.5um(100u") min tin over 1.25um(50u") min nickel
 BODY : Glass filled thermoplastic.
 Flame retardant to UL94 V-0Color Black
 CONTACTS : Brass
 0.1um(4u") min gold over 1.25um(50u") min nickel
 SCREWLOCK : Copper alloy (no plating)
 ELECTRICAL : Voltage rating : 300 V RMS at 50 Hz
 Current rating 7.5A.
 Insulation resistance >5000 M Ohms
 Contact resistance 20 mOhms max.
 CLIMATIC : Temperature range -55 °C up to 85°C, peak at 125°C
 Damp heat 21 days(40 °C-95% HR)
 MARKING : Amphenol...(Series No.)
 Commercial reference
 Manufacturing date

PRODUCT CODE

L 717D XXX P ST



UNLESS OTHERWISE SPECIFIED TOLERANCES		APPROVAL		DATE
U.S.	METRIC	DRAWN	FILED	
.X +/-	0.50	Felix Liu		10/20/14
.XX +/-	0.30	CHECKED	Tony Tang	10/20/14
.XXX +/-	0.20	CHECKED		
FRACTIONS +/-		DRAWING FILE :		
ANGLES +/-	2'	ANGLE OF PROJECTION		
FOR MATERIALS AND FINISHES SEE NOTES		REMOVE SHARP EDGES		
DIMENSIONS		U.S. INCHES		
METRIC MM				

Amphenol	
Amphenol East Asia Limited	
TITLE Machined contacts, D-ST series	
SIZE	DRAWING NO.
A4	L717DXXXPST
SCALE	NONE
SHEET	1 OF 1
REV.	2